

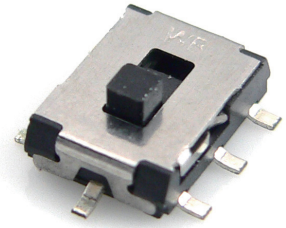


Feature :

- Compact size
- Reflow soldering available

Application :

- Consumer products
- Computer products
- Instrumentation
- Communication equipments
- Hand-held devices



TACT SWITCH

PUSH BUTTON SWITCH

LED TOUCH SENSOR SWITCH

5 DIRECTION NAVIGATION SWITCH WITH LED

MEMBRANE SWITCH

LED LIGHT BAR

SLIDE SWITCH

ROTARY SWITCH

ROCKER SWITCH

DETECT SWITCH

ENCODER

INTERRUPTER

MINIATURE MICRO SWITCH

TELEPHONE HOOK SWITCH

DOOR SWITCH

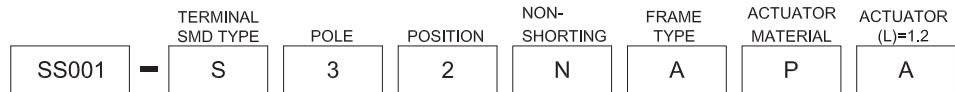
MINI SIZE SOCKET

KNOB

CAP SYMBOL

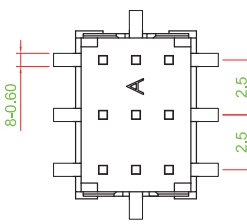
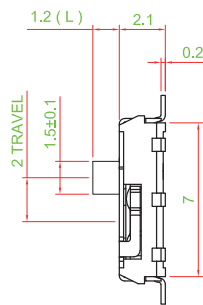
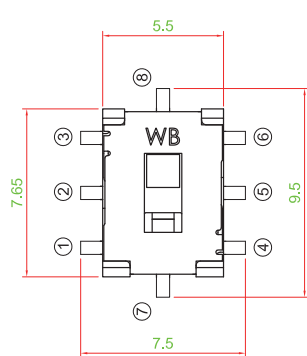
SWITCH SPECIFICATIONS	
POLE - POSITION	3P2T , SMT TYPE
CONTACT RATING	6 V DC , 0.3 A
CONTACT RESISTANCE	50 mΩ MAX. 1.5 V DC ; 100 mA , by Method of Voltage DROP
INSULATION RESISTANCE	100 MΩ MIN. 500 V DC
DIELECTRIC STRENGTH	Breakdown is not Allowable ; 500 V AC for 1 Minute
OPERATING FORCE	200 ± 150gf
OPERATING LIFE	10,000 cycles
OPERATING TEMPERATURE RANGE	-40°C ~ 85°C
TOTAL TRAVEL	2.0 ± 0.2 mm

▶ HOW TO ORDER

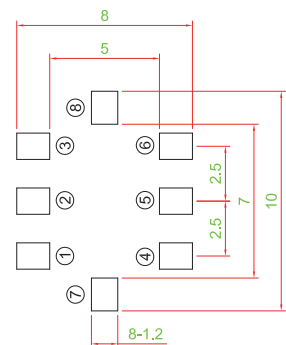


▶ DIMENSION

SS001-S32NAPA



▶ P.C.B. LAYOUT



▶ CIRCUIT

