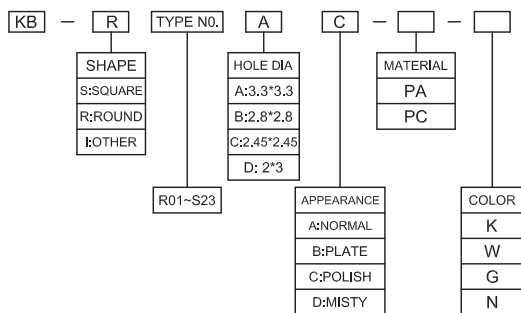
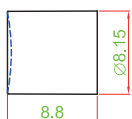




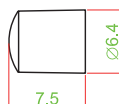
HOW TO ORDER



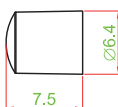
塑膠顏色編碼 (CAP COLOR)		
中文	ENGLISH	CODE
灰色	GRAY	G
綠色	GREEN	N
黑色	BLACK	K
紅色	RED	R
白色	WHITE	W
黃色	YELLOW	Y
透明	TRANSPARENT	T



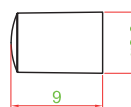
PART NUMBER	KB-R01AC-PA-□
COLOR OF KNOB	G, K, N, R, T
SERIES	A.M.ML.PT.T PS010.PS015.PS018



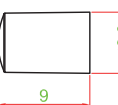
PART NUMBER	KB-R02AD-PA-□
COLOR OF KNOB	K
SERIES	A.M.ML.PT.T PS010.PS015.PS018



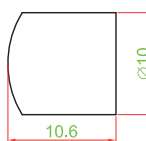
PART NUMBER	KB-R02BD-PA-□
COLOR OF KNOB	K
SERIES	MS.PD



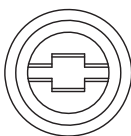
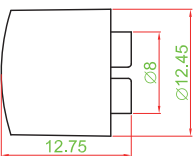
PART NUMBER	KB-R03BA-PA-□
COLOR OF KNOB	G, K, R
SERIES	MS.PD



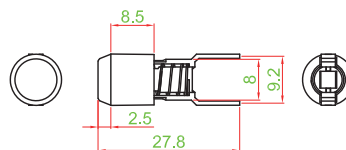
PART NUMBER	KB-R03DA-PA-□
COLOR OF KNOB	G, K, R
SERIES	ACTUATOR (2 x 3 mm)



PART NUMBER	KB-R05AC-PC-□
COLOR OF KNOB	K, T
SERIES	A.M.ML.PT.T PS010.PS015.PS018



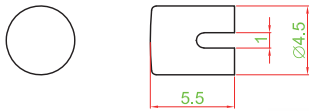
PART NUMBER	KB-R06AD-PA-□
COLOR OF KNOB	G, K, W
SERIES	A.M.ML.PT.T PS010.PS015.PS018



PART NUMBER	KB-R08AC-K-PC-Y
COLOR OF KNOB	B.G.N.O.R.W.Y
SERIES	T



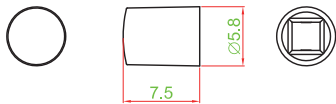
TACT SWITCH
PUSH BUTTON SWITCH
LED TOUCH SENSOR SWITCH
5 DIRECTION NAVIGATION SWITCH WITH LED
MEMBRANE SWITCH
LED LIGHT BAR
SLIDE SWITCH
ROTARY SWITCH
ROCKER SWITCH
DETECT SWITCH
ENCODER
INTERRUPTER
MINIATURE MICRO SWITCH
TELEPHONE HOOK SWITCH
DOOR SWITCH
MINI SIZE SOCKET
KNOB
CAP SYMBOL



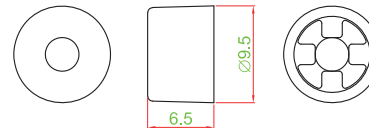
PART NUMBER	KB-R10CA-PA-□
COLOR OF KNOB	B, G, W, K, R
SERIES	KT



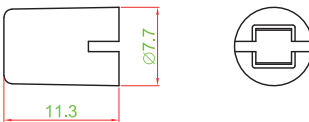
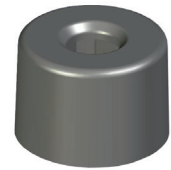
PART NUMBER	KB-R11AC-PA-□
COLOR OF KNOB	K, T
SERIES	A.M.ML.PT.T PS010.PS015.PS018



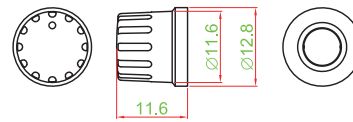
PART NUMBER	KB-R12BD-PA-□
COLOR OF KNOB	K, T
SERIES	PD.MS



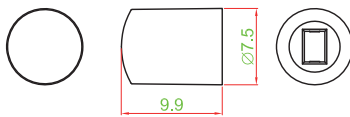
PART NUMBER	KB-R13AC-PA-□
COLOR OF KNOB	K, T
SERIES	ML



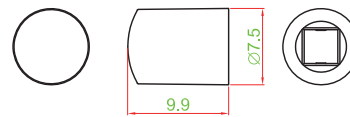
PART NUMBER	KB-R15AA-PA-□
COLOR OF KNOB	K, T, W
SERIES	A.M.ML.PT.T PS010.PS015.PS018



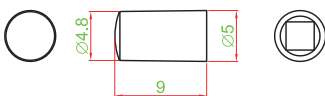
PART NUMBER	KB-R16AH-W-PA-□-2P
COLOR OF KNOB	K, G
SERIES	RS003



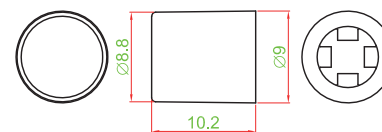
PART NUMBER	KB-R18DA-PA-□
COLOR OF KNOB	R, Y, N, B, W
SERIES	ACTUATOR (2 x 3 mm)



PART NUMBER	KB-R18A1A-PA-□
COLOR OF KNOB	R, Y, N, B, W
SERIES	A.M.ML.PT.T PS010.PS015.PS018



PART NUMBER	KB-R21BC-PA-□
COLOR OF KNOB	K, W
SERIES	MS.PD



PART NUMBER	KB-R22AC-PC-□
COLOR OF KNOB	G, K, W
SERIES	A.M.ML.PT.T PS010.PS015.PS018



TACT SWITCH

PUSH BUTTON SWITCH

LED TOUCH SENSOR SWITCH

5 DIRECTION NAVIGATION SWITCH WITH LED

MEMBRANE SWITCH

LED LIGHT BAR

SLIDE SWITCH

ROTARY SWITCH

ROCKER SWITCH

DETECT SWITCH

ENCODER

INTERRUPTER

MINIATURE MICRO SWITCH

TELEPHONE HOOK SWITCH

DOOR SWITCH

MINI SIZE SOCKET

KNOB

CAP SYMBOL



TACT
SWITCH

PUSH
BUTTON
SWITCH

LED TOUCH
SENSOR
SWITCH

5 DIRECTION
NAVIGATION
SWITCH
WITH LED

MEMBRANE
SWITCH

LED LIGHT
BAR

SLIDE
SWITCH

ROTARY
SWITCH

ROCKER
SWITCH

DETECT
SWITCH

ENCODER

INTERRUPTER

MINIATURE
MICRO
SWITCH

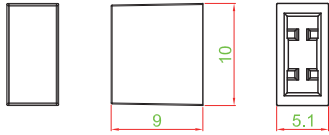
TELEPHONE
HOOK
SWITCH

DOOR
SWITCH

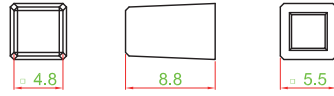
MINI SIZE
SOCKET

KNOB

CAP
SYMBOL



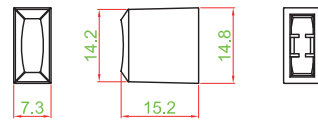
PART NUMBER	KB-S04BA-PA-□
COLOR OF KNOB	K, W
SERIES	MS.PD



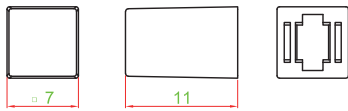
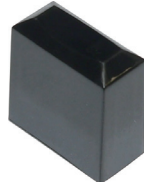
PART NUMBER	KB-S07AC-PA-□
COLOR OF KNOB	G, K, W
SERIES	A.M.ML.PT.T PS010.PS015.PS018



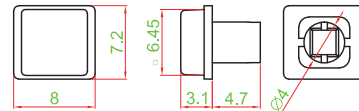
PART NUMBER	KB-S07BC-PA-□
COLOR OF KNOB	G, K, W
SERIES	PD, MS



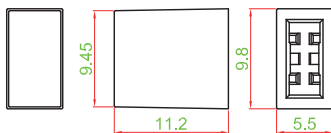
PART NUMBER	KB-S14AC-PA-□ KB-S14AD-PA-□
COLOR OF KNOB	G, K
SERIES	A.M.ML.PT.T PS010.PS015.PS018



PART NUMBER	KB-S19AC-PC-□
COLOR OF KNOB	G, K, W
SERIES	A.M.ML.PT.T PS010.PS015.PS018



PART NUMBER	KB-S20CD-PC-□
COLOR OF KNOB	G, K
SERIES	ACTUATOR (2.45 x 2.45mm)



PART NUMBER	KB-S23BD-PA-□
COLOR OF KNOB	G, K, W
SERIES	MS.PD

